

TANK | DAMAGE | SUPPORT

# WOMEN OF



# OVERWATCH

BLIZZARD EXCLUSIVE  
APRIL 2023 | ISSUE 2



TANK



DAMAGE



SUPPORT





# TABLE OF CONTENTS

4-5	TANK
6-7	D.VA
8-9	JUNKER QUEEN
10-11	ZARYA
12-13	DAMAGE
14-15	WIDOWMAKER
16-17	ASHE
18-19	TRACER
20-21	SUPPORT
22-23	MERCY
24-25	ANA
26-27	KIRIKO





The tank role requires you to play up front and in the midst of the chaos. Tanks will always have the most health when compared to other roles. They are also required to have perks that allow them to survive as long as possible and protect their team.



# ABILITIES



**Boosters** are D.Va's movement ability that allows her to fly in any direction at fast speeds. This ability causes damage to anyone in its way.



**Defense Matrix** is a forward facing shield that allows D.Va to block oncoming projectiles or "eat" powerful ultimates such as Reaper's Blossom or Ashe's Dynamite.



**Micro Missiles** are multiple explosive rockets. These rockets fly in a single direction and can cause up to 126 damage to an enemy.



D.Va's **Self-Destruct** is her ultimate ability that ejects her from her mech and causes it to explode, eliminating enemies almost immediately.

# D.VA

"HANA"

D.Va was once a professional gamer who lived in the spotlight as a celebrity known by many. She now uses her skills to pilot a state-of-the-art mech device to protect her homeland of South Korea. D.Va's mech is powerful and she makes quick use of her abilities to make a quick escape or kill off her foes.



**TRIVIA:**  
What is D.Va's ultimate voiceline?  
Answer: "Nerf this"



# JUNKER QUEEN

“DEZ”

Junker Queen is an axe-swinging leader of the Junkers on a mission to rule the world. Junker Queen is a former wastelander who picks and chooses her battlefield, which tends to be anywhere at any time. She is a new hero in the Overwatch world and is a confident pick if you're looking for a fun time.



## ABILITIES



**Jagged Blade** is an ability that allows Junker Queen to throw a blade that can stick to enemies, cause damage, and pull them closer.



**Carnage** allows for Junker Queen to swing her axe and damage all enemies in front of her. This is a lasting hit that will cause the enemy to bleed.



**Commanding Shout** is a supporting ability that gives Junker Queen and her teammates extra HP. This ability also gives an increased speed.



**Rampage** is Junker Queen's ultimate that allows her to charge forward wounding enemies and preventing them from being able to heal.



### TRIVIA:

What is Junker Queen's Knife's name?

Answer: "Gracie"

TANK



# ABILITIES



**Energy** blocks incoming damage and turns it into heightened damage for the Particle Cannon, Zarya's main weapon.

**Particle Barrier** is a shield that fully surrounds Zarya. This ability allows her to direct her Energy into more power for her Particle Cannon.



**Projected Barrier** allows Zarya to give her shield to teammates and protect them the same way she protects herself.

Zarya's ultimate, **Gravitational Surge**, allows her to suck in enemies and causes damage to them if they are caught in her pull.



# ZARYA

"ALEKSANDRA"

Zarya is one of the world's strongest women. She is a famous athlete in her homeland of Russia. She sacrificed her glory in order to protect her friends and family in a time of war. Zarya's main abilities allow her to convert incoming damage into energy for her Particle Cannon, making her a valuable asset on any team.



## TRIVIA:

What is Zarya's rarest skin?

ANSWER: Alien







## ***DAMAGE***

The damage role strives to deal the most damage to the enemy and finish off the kills. Damage players often have abilities that allow them to escape easily or deal a lot of damage. This role has a passive ability which allows them to reload 35% times faster after eliminating an enemy.



# ABILITIES



**Widow's Kiss** is Widowmaker's versatile and deadly sniper rifle that she uses to kill from long distances. The weapon is charged up and shot to kill enemies in a final blow.

The **Grappling Hook** ability helps Widow escape quickly. This item allows Widow to look in any direction and evade targets flawlessly.



**Venom Mine** is a trap that sticks to any surface and allows Widow to see her enemies through walls while also dealing damage to them.

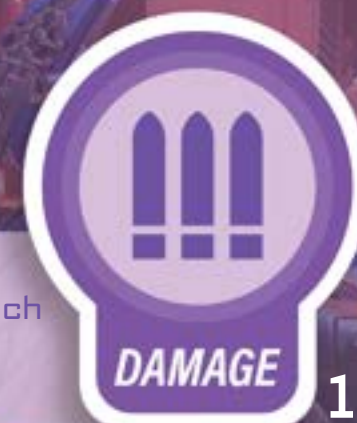
**Infra-Sight** is Widowmaker's recon visor that allows her to see the heat signatures of her enemies through walls for a short period of time.



# WIDOW

"AMELIE"

Widowmaker is a patient, efficient and ruthless assassin. She shows no remorse or emotion towards others and looks good doing it. She will do whatever she needs to eliminate her opponents and uses her powerful abilities to get the job done. Her main weapon is a sniper that can take an enemy out with one blow.



DAMAGE

## TRIVIA:

What is Widow's name in the French version of Overwatch?

ANSWER: *Fatale*



# ASHE

“CALAMITY”

Ashe is a respected leader in the criminal underworld and the leader of the Deadlock Rebels Gang. She is an ambitious and calculated woman that sets her eye on the prize. Ashe was born into a wealthy family who cared more about their money than their daughter. This is what led to her very rebellious personality.



# ABILITIES



**The Viper** is Ashe's main weapon, a hitscan rifle that fires quick and deadly shots. If she uses ADS her shots become more accurate.

**Dynamite** is an explosive that detonates causing enemies to catch on fire and dealing damage over time.



**Coach Gun** is a secondary weapon that allows Ashe to blast enemies away doing small amounts of damage. This ability comes in handy for getting out of sticky situations.

**B.O.B** is Ashe's ultimate ability that allows her to summon an Omnic sidekick named Bob. B.O.B will knock enemies into the air and shoot at them automatically.



## TRIVIA:

What flower is on every Ashe skin?

ANSWER: Rose



DAMAGE



# ABILITIES



Tracer's main weapons are her **Pulse Pistols**. These guns are rapid-fire and are ideal for close range fights.

**Blink** is Tracer's powerful ability that allows her to zip through space in any direction. She has three charges and can move very fast while using them.



**Recall** allows tracer to travel backwards in time, restoring her health in the process. She moves backwards for a total of three seconds.

**Pulse Bomb** is a large sticky explosive that allows her to cause a high amount of damage to the opponent it lands on.



# TRACER

"LENA"

Tracer is a time-jumping girl and a force to be reckoned with. Tracer fights to protect her people and tries to make the world a better place whenever and wherever she can. She brings optimism and skill to any situation and can be a vital asset in a team. Tracer's abilities allow her to control her own time. This is effective in helping her survive, although she has less health than other heros.



DAMAGE

**TRIVIA:**  
What 2018 movie did Tracer appear in?  
**ANSWER:** Ready Player One





## SUPPORT

Support heroes are the backbone of their teams and essential for survival. They often have abilities to heal their team and support them in other ways such as boosting damage or removing negative effects. This role has a passive ability that allows players to automatically heal over time.



# ABILITIES



**Sympathetic Recovery** is a passive ability that allows Mercy to heal over time if not damaged for 1.5 seconds.

Mercy's **Resurrect** allows her to bring fallen teammates back to life with full HP.



**Angelic Descent** allows mercy to fall slowly from great heights. Her **Guardian Angel** ability also allows her to fly to nearby teammates.

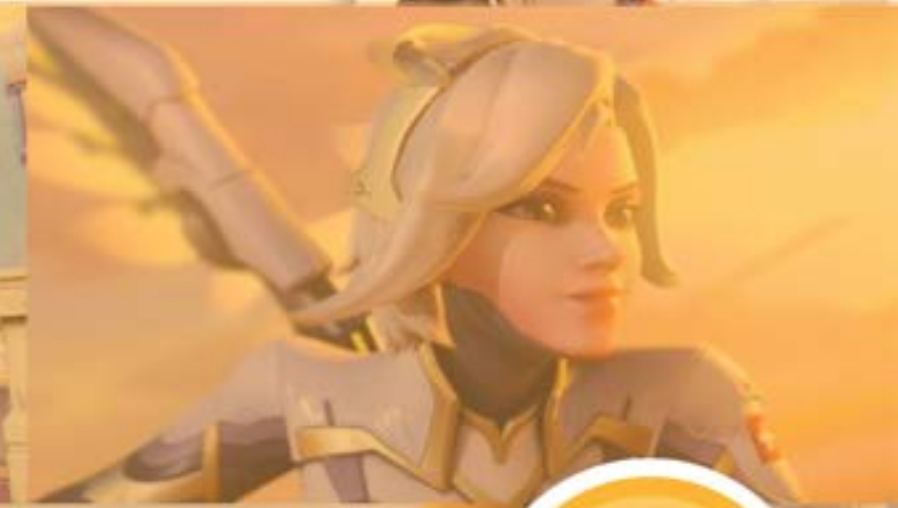
**Valkyrie** is Mercy's ultimate ability that allows her to fly through the air and heal or boost all of her teammates at once.



# MERCY

"ANGELA"

Mercy is a Guardian Angel, an amazing scientist and an advocate for peace. She is from Switzerland and strives to heal the world. Overwatch offered her an opportunity to help save lives on a large scale. She takes care of those affected by war and cares for those in crisis all around the world.



**TRIVIA:**  
What 2023 Valentine's Day event was Mercy apart of?  
**ANSWER:** *Love's Reach*





# ANA

"AMARI"

Ana is one of the founding members of Overwatch and uses great skill to protect her home of Cairo, Egypt. Ana was once considered to be the world's best sniper and uses her rifle to heal her teammates. She uses her abilities to damage her foes while also protecting her team.



## ABILITIES



Ana's **Biotic Rifle** is used to heal her teammates and damage her foes. The scope of her rifle allows for highly accurate shots.

**Sleep Dart** is a useful ability that puts enemies to sleep for a few seconds. This allows her to render an enemy useless, so long as her team doesn't wake them.



**Biotic Grenade** is a throwable item that can heal her teammates or "anti" enemies, making them unable to heal.

**Nano Boost** is Ana's Ultimate Ability that allows her to hit a chosen teammate with a combat boost. Allowing them to take less damage and deal more.



SUPPORT

### TRIVIA:

What Overwatch character is Ana's daughter?

ANSWER: Pharah



# ABILITIES



**Wall Climb** is Kiriko's passive ability that allows her to latch onto walls and climb them.

**Swift Step** is an ability that allows Kiriko to teleport to a nearby ally through walls.



**Protection Suzu** is a throwable item that allows Kiriko to immunize her teammates from damage, negative effects and even ultimates.

**Kitsune Rush** is Kiriko's Ultimate Ability that summons a fox spirit to guide her teammates. This increases movement and attack speeds, and reduces cooldowns for her



# KIRIKO

"KAMORI"



Daughter of a former swordmaster, Kiriko is a spiritual woman who is skilled with her knives. She is from Japan and aims to heal her fractured city. She was taught by her mother to use the art of healing. Her abilities are useful in protecting her teammates and keeping them alive for long periods of time.



**TRIVIA:**  
What does "Kiri" mean in Japanese?

**ANSWER:** "Mist"





**BLIZZARD**  
ENTERTAINMENT

**ACTIVISION**

